



iTaukei Land, Our Heritage, Our Future



# MORE GEOSPATIAL AWARENESS IN 2021



Officers at the 1st Zoom Awareness Meeting for IT and Geospatial

The CEO and Chairman of the Information Technology Development Monitoring Committee-ITDMC, Mr Tevita Kuruvakadua at the first committee meeting (Thursday 7th January of 2021) instructed the Geospatial Team to create more awareness on geospatial issues including developments, technologies, methodologies, research papers, webinars and so forth. To that extent, the team has embarked team to use all necessary means of data sharing in this new era. This monthly bulletin is one of such mediums.

Another medium that the team have already completed one session in is with the use of video conferencing via Zoom facilities. This will be carried out every mid month in one hour sessions. The first session was fully attended under the watchful eyes of Senior Learning & Development Officer, Mrs Mere Wong on Wednesday 27th January, 2021. The premier session looked at three topics of interest for geospatial and IT.

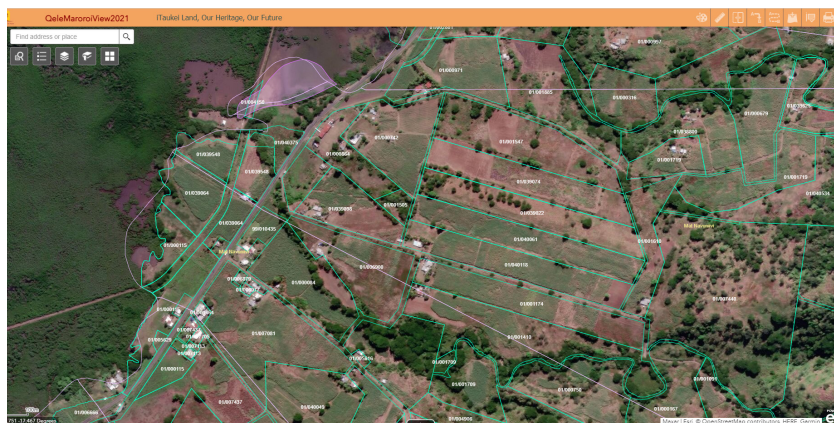
The first topic was on Cybersecurity and in particular how to identify security risks. Our Cybersecurity Officer, Mr Rajneet Harish shared the latest news regarding

cyber attacks and security issues such as phishing, ransomware, malware and viruses. Furthermore CISO shared the breakdown on the 19th January security issues and all the details of events that transpired.

The second topic was on Double Leasing and this was covered by Geospatial Analyst, Mrs Vikatoria Wiliame. She talked in depth of the errors that she found during her weekly checks and ways to avoid them. The attendants were reminded that the target was zero double leasing as it's a concern shared by the hierarchy of the Board of Directors.

The third topic covered is the new QeleMaroroi Viewer. Geospatial Information Coordinator, Mr Isireli Buwawa shared some historic information on the old viewer and how it was created in 2016 the codes of which are now incompatible with today's new web browsers.

GIC mentioned that the QeleMaroroi2021 comes with new tools, layers and can even be accessed through the ArcGIS Explorer app for navigational purposes. Manuals for this will be uploaded to the intranet for further references



The new QeleMaroroi Viewer



# The new QeLeMaroroi Viewer 2021

Progress in the IT field are amongst the quickest of all technological developments in the past decade. This is true for both software and hardware. The QeLeMaroroi viewer was developed in 2016 by external consultants and tailored to meet network facilities and internet settings for that period. Within four years the QeLeMaroroi viewer started having compatibility problems with new internet browsers. It can only run and operate perfectly in Microsoft's Internet Explorer. IE is being slowly phased out and it's replacement Microsoft Edge have new protocols and security upgrades that doesn't allow QeLeMaroroi to fully load. This prompt the geospatial team to look into creating a newer version of QeLeMaroroi to suit the internet and computing environment in 2021. TLTB had acquired the Enterprise Licence for ArcGIS Online in 2014 but was slow in utilising the various Apps in it. Survey 123 and Web App Builder were the only Apps using since then. In the past 2



years this has increased markedly.

## QeLeMaroroi2021

The QeLeMaroroi2021 is created using the Web App Builder which is a user friendly app in ESRI's ArcGIS Suite. The steps in creating the QeLeMaroroi App Are:

1. Load the layers into ArcGIS Online through the Content page.

2. The symbologies, zoom levels and labels are set.

3. Then the widgets are configured. These are the various tools that can be used to search, calculate, navigate, and explore the various layers.

The QeLeMaroroi2021 App can be accessed on the following link:

<https://bit.ly/2LRxAKJ>

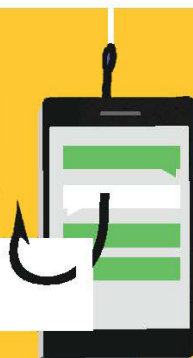
## Secure IT. IT's up to you.



### Friend or foe?

Phishers want to get their hooks into you as fast as possible. If you get an email or a text message from someone who is too eager to be friends and to offer you a great opportunity, you could be smelling something **phishy**.

Hey I spoke to Jone yesterday and he said I should contact you directly. Send me a friend request so I can transfer you that money now



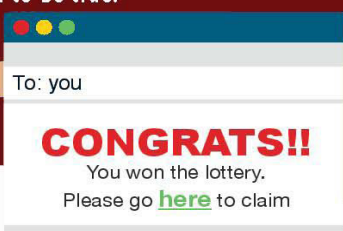
### Slow and steady

If someone is pressing you to do something right now, slow down the interaction. **Ask more questions** and consult people in your department or TLTB IT. If you can't confirm that it's legitimate, pass it on for a second opinion.



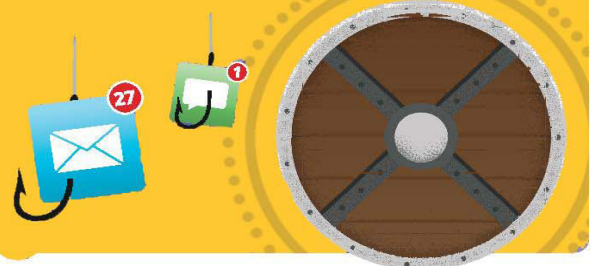
### Too good to be true

Phishers want you to make mistakes, and they'll offer you amazing deals or quick money to get you to make that careless choice. Ask yourself; **is this too good to be true?**



### Phish fight

Play hard to get! Don't download anything you suspect might be dangerous, and don't send a unknown contact the information they ask for.



In an effort to minimize double leasing and other problems as well as improve the standard of Geospatial work, a presentation was made at the first Geospatial Zoom Meeting held on 27th January 2021. The issues highlighted were the recurring errors in Lease Master updates as well as proposed solutions to minimize these inaccuracies and improve the update of data on Lease Master and Landsoft:

## 1. Potential Double Leasing

a. During charting verification, some cases were found to be overlapping polygons and deemed as possible double leasing:

i. Both records shown as Active on Landsoft, No Surrender or Expiry cases open – term is still valid

ii. Leases issued after Ministry of Local Government Leases are issued – confirmed by DGMOR&D to be double leasing.

iii. Leases issued when old leases still Active – pending surrender/expiry. EOM states surrender process should be completed and closed before a new case is opened.

## 2. Other Concerns

a. Other issues have also been identified during verification as below:

i. Area Mismatch – Charted area does not match area applied for in Landsoft. Whatever is charted should match area applied for and correspond to what is on the ground. If any amendments are done to the charting, this should be reflected in Landsoft.

ii. LOU / Reserve confirmation issues – a few highlighted cases whereby LOU on Landsoft and on ArcMap do not agree. GIOs to ensure correct LOU/Reserve status, to check thoroughly and if in doubt, refer to Reserves or Geospatial HQ for confirmation

iii. Lease Alignment with Registered survey – survey plans are to be charted as soon as approved by Ministry of Lands for lease charting alignment before

Registered lease plans are prepared.

iv. Null Charting – this is a low risk to the Board but important for Data integrity. All polygons without information should be removed.

v. Duplicate Charting – another low risk to the Board but affects Data integrity and must be avoided.

vi. Uncharted Lease – Before preparing lease plans, Geospatial Officers need to ensure Lease Master ID insertion is done to maintain the link with Landsoft. Without this link, the system will record it as an uncharted lease.

## 3. Remedial Action

a. Live server layer – no individual layers to be used for new case updates, everyone to access live Lease Master on the GIS Server. This way you are aware of what your “neighbor” is charting on, hence low risk of double charting/leasing.

b. Do not move cases that still have processes pending with Existing Leases – Geospatial Officers are being called up for moving cases even though there are pending processes like surrender. GIO’s to refer cases back to Estates to clear pending processes before moving status for Land Available.

c. Organized Geospatial work structure – There has to be a proper arrangement whereby GIA’s work is checked by GIO’s instead of both doing the same tasks with no verification. Also, refer to Reserves or GIC for LOU/Reserve confirmations.

d. Chart survey plans before preparing lease documents – GIOs not to prepare lease plans until registered survey has been charted and clearance confirmed to avoid possible overlaps with other leases/surveys.

e. Each new case must be charted on a new polygon – no amending of existing polygons. In Landsoft a new record is opened for every new case so this should be the same for charting on

Lease Master to maintain historical data. At the moment some officers are amending the existing records to insert new case references. This removes the old record link with Landsoft.

## 4. Issues Raised by Regions

a. Leases in parked arrears – These are on case by case basis and as advised by Manager Legal, should be referred to Region’s Legal Officer for checking and confirmation before further action.

b. Existing charting of expired/deactivated leases or closed cases – Geospatial SOP will require GIOs to transfer these charting to the Old Lease layer before charting new cases. For the time being, these chartings should not be deleted from Lease Master as this is the historical data.

c. Amending of Partial Surrender Cases – this is the only instance when existing charting can be amended to delete area surrendered. A suggestion put forward is that surrendered portions can be re-charted as a separate record, which is a good idea to maintain historical data, but requires a separate reference. An alternative is to copy the original lease to Old Lease layer before the amending in Lease Master to reflect the partial surrender.

## 5. Conclusion

a. Some changes mentioned above will be submitted in the proposed Geospatial SOP which Geospatial HQ is currently working on.

b. Geospatial Teams are encouraged to liaise with GIC and HQ Team on any issues they may be facing and not work in isolation.





## BEING A GEOSPATIAL OFFICER

BY GA RUSIATE TURUVA

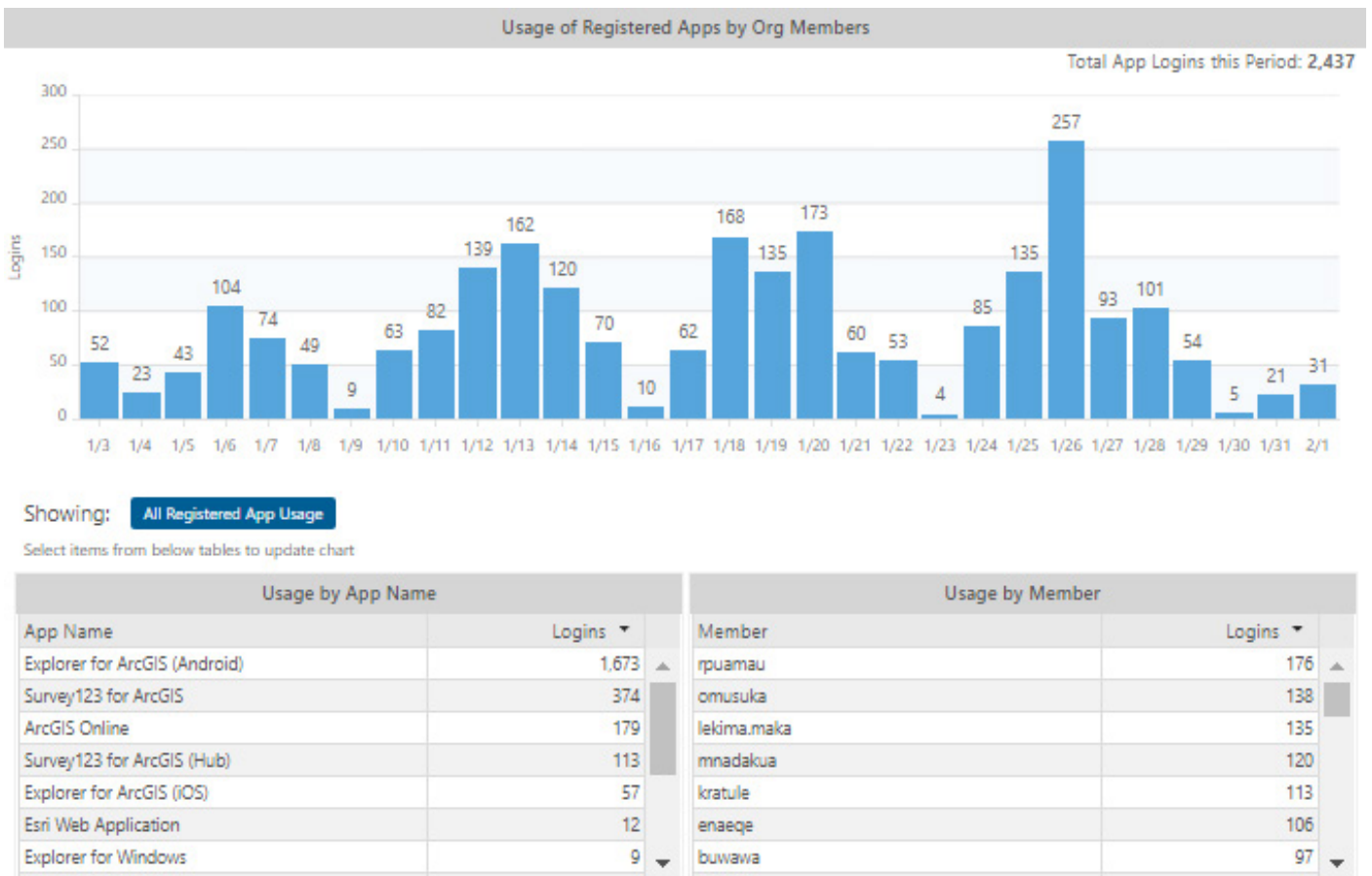
Being a Geospatial Analyst regardless of industry, at the beginning of his or her career a geospatial analyst would likely take on the following job duties: Produce data layers, maps, tables or reports using special analysis procedures or geographic information systems (GIS) technology, equipment or systems. This is my 4th week in the Board and the transition into the organization has been very eye-opening in terms of the work environment and also meeting the new staff. My first 2 weeks in the company have been eventful and has taken a while to adjust to the new environment. Coming into a focused oriented workspace especially when the department is solely responsible for the protection and safekeeping of the organizational information and also geospatial data. I am still familiarizing myself with the daily work routines and with the help of my colleagues and

my seniors I am able to complete tasks. In terms of the estates operating manual in GIS related dealings especially with the incorporation of the Geospatial Standard Operating Procedures, I am currently working with Geospatial Assistant Vika in devising a Standard Operating Procedures solely for GIS units across the regions to utilize in their everyday work routines due to the fact that we may all have a single standard operating procedure (SOP) and only one guideline. Particularly, the new software's and applications including the resources that are being applied, the new initiative proposed by GIC is an innovative way in moving forward in relations to cloud based applications where the data is stored and accessed by relevant users and can be edited and published by the authorized user which greatly assist in the gathering the data to create the appropriate layers, the initialization of GIS field to

office (cloud based) monitoring and interactions will be an exciting new project and will be looking forward to working with the GIS Team in creating its framework and implementing it into the GIS units in the various regions. It has been an overwhelming experience for me to be part of this organization as I look forward to gaining the relevant knowledge and skills with further training and in turn contributing to the better utilization of land within the Board.



## ArcGIS Online Usage Statistics



Jan 3, 2021, 12:00:00 AM GMT - Feb 1, 2021, 12:20:13 PM GMT



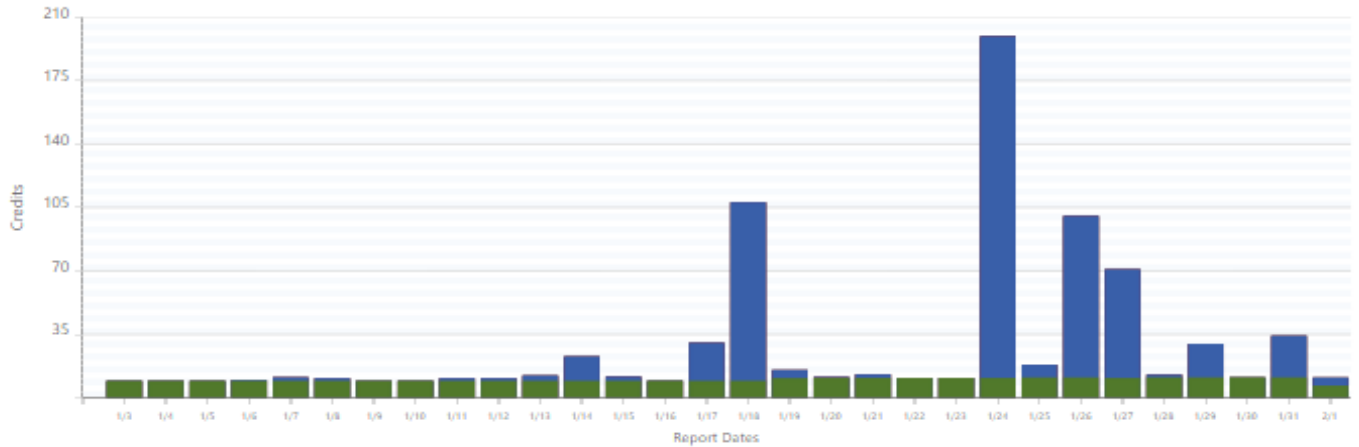
830.70 credits utilized this period

Credit Utilization Summary



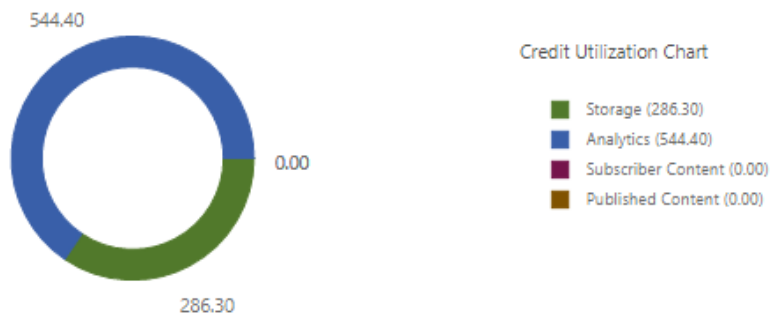
Usage Aggregation by Time

Use the date range selectors above or select a chart column to update the report dates



Usage Aggregation by Type

Select a chart slice or legend title to view more details for the selected usage category



MEET YOUR GEOSPATIAL TEAM - IT DEPARTMENT

