

TOSO KI LIU



JAN - MAR 2025 QUARTERLY NEWSLETTER



Mataqali Vusatoranikuku celebrating the arrival of their new truck in the village

Mataqali Vusatoranikuku

in Kuku, Tailevu, Turns Land Proceeds into Development Opportunities.

The Mataqali Vusatoranikuku of Molituvu Village, despite owning one of the smallest land portions within the Yavusa Nailagolaba in Kuku, Bau, Tailevu, has taken a bold step towards economic empowerment—proving that with strategic planning, even limited resources can create lasting impact.

Speaking on behalf of the Mataqali, spokesman and trustee Mr. Autiko Nagonenaka shared that their first major investment was the purchase of a 3-tonne truck to provide much-needed transportation services within the Mataqali and the village. This milestone was officially marked yesterday (26 March 2025) when the truck was handed over in a celebration filled with enthusiasm and optimism about their future.

With an annual income of approximately \$40,000, the Mataqali sought guidance from the iTaukei Land Trust Board (TLTB) in Nausori, requesting a series of consultations and awareness sessions to help them manage their land and lease funds more effectively. Following

two months of discussions, they made a collective decision in December last year to venture into business which saw the birth of the mataqali-owned company known as Vusatoranikuku Enterprise Pte Ltd.

A key part of their financial strategy involved their 12 newly subdivided lots. Out of these, they decided to hold onto the premium from four lots—to fund their development projects. The Mataqali has also established a structured revenue-sharing model, where 70% of the proceeds will be equally distributed among members under the Equal Rent Distribution (ERD) system, while the remaining 30% will be deposited into the Mataqali Trust account for future investments.

Their next phase of development includes the development of two residential lots as real estate properties and the construction of a new \$40,000 house for the Turaga Ni Mataqali. Once completed, they plan to undertake a large-scale renovation project to upgrade all Mataqali homes within the village.■



TLTB and FHCL Join Forces to Correct Lease Boundaries and Secure Certification

PAGE: 2



New Business Direction Consultation in Lomaiviti

PAGE: 5



Consultation in Bua Province

PAGE: 6



Awareness at Nagigi Village

Awareness & Consultation in Nagigi, Savusavu

TLTB, joined by the Cakaudrove Provincial Officer, continued its awareness and consultation efforts in Nagigi, Savusavu, Cakaudrove.

This important session focused on Mataqali Vuniyaro's Landowning Unit (LOU) Profiling, Consultation, and Land Use Development Plan.

- What is LOU Profiling & Land Use Planning?
- LOU Profiling – This process helps document the landowning unit's details, including its history, land boundaries, ownership structure, and socio-economic status. It ensures proper recognition and organization of customary landowners.
- Land Use Planning & Development – A strategic plan is created to identify sustainable and beneficial ways to use the land. This includes:
 - » Agricultural and commercial opportunities
 - » Infrastructure development
 - » Conservation & environmental sustainability
 - » Future growth and economic benefits for the landowning unit

Through this initiative, TLTB ensures better land management, informed decision-making, and maximized benefits for landowners and future generations.

Vinaka vakalevu to all who participated!■

TLTB and FHCL Join Forces to Correct Lease Boundaries and Secure Certification

The iTaukei Land Trust Board (TLTB) and Fiji Hardwood Corporation Limited (FHCL) signed an agreement to form a taskforce in a collaborative effort to verify and correct lease boundaries for FHCL's mahogany leases in Fiji.

A cheque of \$110,167.84 was also presented by FHCL chairman Mr Iowane Naiveli to TLTB to fund the Fiji Hardwood Taskforce especially in correcting the boundary of more than

deploy one of the most advanced Trinity Pro drone in the South Pacific, capable of wide coverage and deep foliage penetration. This technology will greatly enhance the accuracy and efficiency of the boundary verification process.

FHCL General Manager Mr. Semi Dranibaka welcomed the collaboration, emphasizing that the main objective is to ensure rightful compensation for the correct



Cheque presented by FHCL to the Executive Management

60,000 hectares of Fiji Hardwood leases across in Viti Levu and Vanua Levu.

Chief Executive Officer Mr. Solomon Nata stated that TLTB is committed to assisting FHCL in ensuring accurate lease boundaries, which will benefit both organisations and most importantly – our landowners.

"We will be working as part of the Fiji Hardwood Taskforce to engage with landowners and utilize modern technology to correct lease boundaries for approximately 63,000 hectares of mahogany plantations," said Mr. Nata.

The exercise will cover 122 FHCL leases across the two major islands. "One of the key benefits of this initiative is that it will help FHCL obtain the necessary certification for its timber products. With proper certification, FHCL will be able to access direct international markets at competitive prices, ensuring greater returns for both the FHCL and the landowners," Mr. Nata added.

To support this initiative, TLTB will

landowning units.

"We are grateful to TLTB for this partnership, which allows us to verify and correct lease boundaries for 122 leases. Over the years, discrepancies in records between our two organizations have led to confusion, and this initiative, supported by an MOU, will enable us to align our data and establish accurate records," said Mr. Dranibaka.

He further highlighted that obtaining timber certification is a priority for FHCL.

"This certification is crucial, as it will allow us to secure better market opportunities and ultimately provide greater financial benefits to our landowners."

This partnership marks a significant step towards improving lease management, enhancing transparency, and ensuring that landowners receive their fair share of benefits from Fiji's mahogany industry.■



Mataqali Nakorolevu meeting with CEO Mr Solomone Nata in Nabouwalu

Issuance of Lease to Mataqali Nakorolevu, Nabouwalu

We are excited to announce that the Mataqali Nakorolevu of Nabouwalu Village, Bua, has officially received their lease document! This was handed over by CEO Mr Solomone Nata.

This initiative is part of TLTB's ongoing commitment to supporting development projects for landowners in the Vuya District. The Mataqali Nakorolevu Development

Trust Deed applied for a residential lease to build a dwelling as an investment opportunity. The CEO presented the lease last Saturday, receiving a warm and heartfelt welcome from the community, which was beyond his expectations.

The members of the mataqali expressed great joy and appreciation. Buli Raviravi thanked the board for this initiative,

especially for personally reaching out to the community and landowners. He noted that this was the first time a CEO had visited them.

The CEO emphasized the importance of unity among the mataqali members in driving the success of their initiatives. Congratulations to Mataqali Nakorolevu on this milestone!■



Locality map of Nakavu

Reconnecting with Ancestral Lands

On 13 February, the Landowners Affairs and Land Services Department embarked on a significant journey into the Namosi Highlands, camping overnight to inspect iTaukei lands owned by the Mataqali Nakorobalavu of Nakavu Village, Veivatuloa.

Trekking 3km inland, the team set off from the village with members of the Mataqali at 10:30am, reaching the campsite by 3:30pm before venturing further to the Mataqali land.

Upon arrival, the Mataqali members were overwhelmed with emotion as they set foot on their ancestral land— a place untouched by their lineage for four generations.

LOU representative, Mr. Atonio Lacake,

shared, "It has been 4 generations since someone from our Mataqali has set foot on this land. For us, this is a new milestone. It has brought to life the stories our elders told us about where we journeyed from before settling at Nakavu Village."

This visit aimed to assist the Mataqali in identifying potential development projects and exploring access routes to their lands. With the support of the Board, the Mataqali is set to begin their 3-year strategic development plan, with the first project focused on constructing access roads to their lands.

This initiative is part of the TLTB's mission to empower landowners in utilizing their lands effectively with support from the iTaukei Development Fund Facility.■

Positive Consultations on New Business Initiatives in Cakaudrove

We're excited to share that the TLTB New Business Consultation was a great success in the village of Koroivonu, Tunuloa, Cakaudrove!

The meeting resulted in a positive outcome, with many landowners



TLTB Consultation at Koroivonu, Cakaudrove

expressing strong interest in financial literacy training and improving their resources. Their dedication to enhancing their businesses and ensuring sustainability for future generations is truly inspiring.

The second consultation, held at 3:30 pm in Vuinadi Village, Koroalau, Cakaudrove, showed a great eagerness

from the landowners to embrace the Board's new initiatives. They are eager to collaborate with us and develop their large parcels of land.

We're looking forward to the next steps and building these fruitful partnerships together.■



Dratabu Consultation

Landowners Affairs Consultation

The Landowners Affairs Department recently conducted a Land Use Planning Consultation for Tokatoka Vunaniukala; Mataqali Ilovaravara at Dratabu Village.

Key discussions included:

- Joint inspection with the Land Owning Unit (LOU)
- Identifying land to be reserved for future generations
- Allocating land for wealth creation
- LOU profiling and Strategic Development Planning for sustainable growth

This initiative aims to ensure the best use of land for the benefit of our people today and for generations to come.■



Mr Batigai at his farm in Sawani, Naitasiri

Empowering iTaukei Landowners in Sawani

Meet Moape Batigai from Sawani Village, Naitasiri, a proud recipient of the iTaukei Development Fund Facility in partnership with TLTB. With a \$10,000 loan, Mr Batigai has successfully cleared his land and purchased essential farm implements, paving the way for a thriving agricultural venture.

This is yet another success story under the iTaukei Development Fund Facility, which is dedicated to supporting iTaukei landowners in unlocking the full potential of their land for economic growth and self-sufficiency.

support to iTaukei landowners, assisting them in developing their land for agriculture, business, and other income-generating projects. It is designed to empower individuals and communities by providing access to funding, ensuring that landowners can turn their dreams into reality.

Are you an iTaukei landowner with a vision for your land? Now is the time to inquire about the iTaukei Development Fund Facility! Whether it's farming, business, or other ventures, this facility is here to support and uplift you.■

What is the iTaukei Development Fund Facility?

This initiative provides financial



CEO's Consultation Team at Nasauvaki Village in Moturiki

New Business Direction Consultation in Lomaiviti

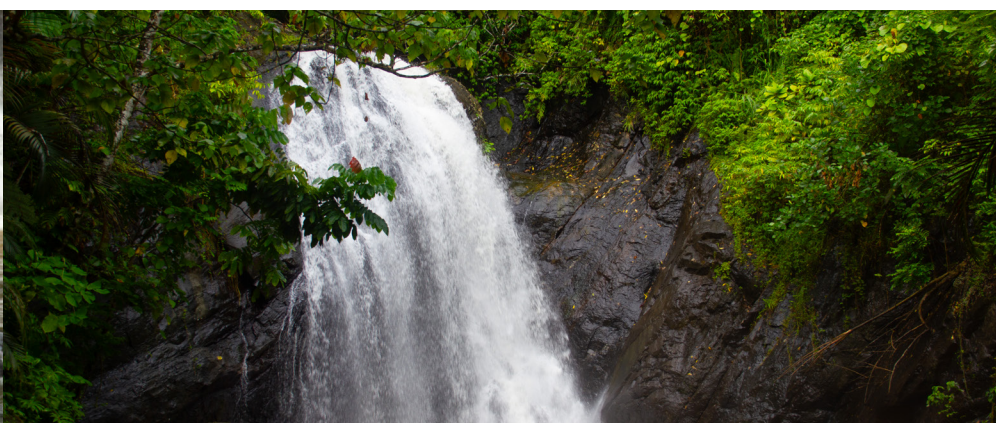
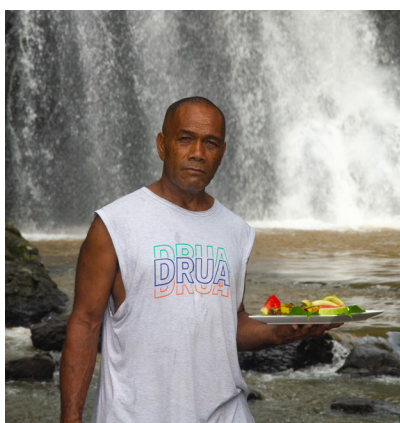
The iTaukei Land Trust Board (TLTB) has commenced its New Business Direction consultation in the province of Lomaiviti, beginning on the island of Moturiki.

CEO Mr. Solomon Nata led a team from the Central Eastern Region, Landowners Affairs, and Land Use Planning & Trust to Nasauvaki Village, where the first tikina (district) consultation was held. The consultation focuses on three key areas:

1. Engaging with the Lomaiviti Provincial Office (iTaukei Affairs Board) to address issues raised by landowners and the vanua.
 2. Presenting TLTB's New Business Initiative, which has been in motion since 2024, with over 120 districts already covered. The initiative aims to drive economic empowerment for indigenous landowners.
 3. Conducting a land-use survey for Ovalau, gathering data to develop a Master Land Use Plan for sustainable development.
- The team is now in Tai Village for

- the Tikina Bureta Meeting.
- On Wednesday, they will be in Visoto Village for Tikina Lovoni.
- On Thursday, they will be in Levuka Vakaviti for Tikina Levuka.
- On Friday, they will conclude in Nasinu Village for Tikina Nasinu.

This collaborative approach ensures landowners' voices are heard while laying the groundwork for sustainable land development, LOU development and wealth creation and overall national economic growth.■



Turaga ni Koro of Vuadomo Mr Isimeli Serea leading the charge for the Muanivatu Trails

Muanivatu Trails Eco-Tourism Project

The Muanivatu Trails, nestled just outside the busy atmosphere of Savusavu, is a serene and picturesque eco-tourism gem. This hidden paradise offers visitors a unique experience, With the tranquility of the waterfall complemented by a massage parlor overlooking the lower banks.

Managed by the Mataqali Vuadomo of Vuadomo Village in Cakaudrove, the project has flourished with the support of a \$30,000 loan from the iTaukei Development Fund Facility (TDFF) under TLTB for the set up the operation. It has become a must-visit destination, attracting both tourists and locals

looking to connect with nature and enjoy a peaceful retreat.

The efforts to blend natural beauty with sustainable tourism highlight the region's potential for eco-friendly growth.■



Inspection of potential project sites in Vanua Levu

Turning Dreams into Reality in Yaroi Village

Today's inspection with Mataqali Nakama in Yaroi Village, Nasavusavu, Cakaudrove marks a significant step toward a brighter future for the landowners!

The mataqali wants to complete the purchase of 25 acres of freehold land in Savusavu town under the *Buy Back Scheme*.

But now, thanks to TLTB's new initiative, a game-changing deal is on the horizon!

The Board is set to help the landowners pay off the remaining balance, finally turning their lifelong dream into a reality. During the visit, Mr Nata assured the landowners of the Board's unwavering commitment to their needs, paving the way for

land development that will benefit generations to come.

The CEO stated, "We have the funds, so why not assist in providing better opportunities?"

This partnership represents hope, growth, and a promising future for the people of Yaroi Village. Here's to progress and prosperity!■



Successful Consultation in Bua Province

General Manager Landowners Affairs, Mr. Peni Qalo, recently concluded a productive 2-day consultation with landowners from the 4 districts of Solevu, Nadi, Wainunu, and Kubulau within the Bua Province.

We are thrilled to have received positive feedback from the landowners who expressed their gratitude and appreciation to the Board for this initiative. Many have also shown great interest in:

- LUP (Land Use Planning) training to better manage their resources
- Applying for the iTaukei Development Fund (TDF) to kickstart business ventures.

One of the landowners commended the Board for its commitment to empowering iTaukei landowners through the TDF initiative, which is aimed at improving the standard of living and providing a sustainable source of capital for business opportunities.

We are proud to support our landowners and look forward to more impactful engagements!■

Court Orders to Vacate for Defaulting Tenants

The iTaukei Land Trust Board (TLTB) has reduced its rent arrears by 11.2%, cutting outstanding payments from \$31.7 million at 1st January to \$28.1 million at end of February—a total reduction of \$3.5 million.

The number of tenants in arrears has also dropped from 29,133 to 25,444 as the result of intensified collection efforts. Over the past two months, we have strengthened our rent collection strategies and will continue to do so, including legal action against defaulters.

As part of this initiative, eight court orders to vacate have already been secured, signaling TLTB's firm stance on ensuring landowners receive their

rightful dues. We urge all tenants with outstanding arrears to settle their payments immediately. Failure to do so will result in court action, which may lead to disconnection of utilities, repossession of land titles, and evictions.

This applies to all lease categories—agriculture, residential, industrial, commercial, and special leases. Reminder: Rent payments are due on 1st January and 1st July every year.

To avoid legal action, tenants are encouraged to visit their nearest TLTB office, call: 9995 923, or email: info@tltb.com.fj to arrange payment and settle their accounts.■



At the Senior Management Team in Drekeniwai Village, Cakaudrove

Senior Managers Meeting – Drekeniwai Village, Cakaudrove

An inspiring and spiritually enriching gathering as Senior Managers came together in the beautiful Drekeniwai Village in Cakaudrove for its monthly meeting.

Message from the Talatala: Reflecting on the wisdom of the scriptures, the *Talatala* reminded us:

1 Corinthians 2:2 – “For I resolved to know nothing while I was with you except Jesus Christ and him crucified.”
A powerful call to humility and purpose, reminding us to lead with faith and integrity.

Ephesians 1:18-19 – “I pray that the eyes of your heart may be enlightened in order

that you may know the hope to which He has called you, the riches of His glorious inheritance in His holy people, and His incomparably great power for us who believe.”

This resonated deeply with the theme of inheritance – passed to individuals, clans, and families – challenging us to balance communalism and capitalism with wisdom and compassion.

As the only Lands Administrator in the world with this unique responsibility, we are called to lead with vision, faith, and purpose.

CEO’s Theme: “*Leadership that delivers on time.*”

A call to action for timely and effective leadership, ensuring the needs of our landowners and stakeholders are met with commitment and excellence.

The CEO reminded the Senior Managers to never lose sight of TLTB’s founding purpose – to serve the very people for whom it was established. He emphasized that TLTB exists because of the chiefs and the landowners, whose trust and legacy we are entrusted to uphold.

Vinaka vakalevu to the *vanua* of Naqorovakarua in Drekeniwai Village for your warm hospitality and generosity in hosting the Senior Managers Meeting for the Board. Your support and kindness are truly appreciated.■

Landowners Rights & Obligations

The iTaukei Land Trust Board (TLTB) recognizes the importance of raising awareness about the rights and responsibilities of landowners in all leasing agreements with TLTB.

The rights and responsibilities of all iTaukei landowners regarding their leased land include the following:
Rights

1. iTaukei land ownership rights safeguarded under the 2013 Constitution, iTaukei Lands Act 1905 and iTaukei Land Trust Act 1940.
2. Right to have iTaukei land ownership and customary title disputes determined by the iTaukei Lands and Fisheries Commission (TLFC).
3. Customary rights to use and occupy iTaukei land and the right to be registered as part of the iTaukei landowning unit in the iVola ni Kawa Bula (VKB).
4. Scope of itaukei land – high water mark upwards, there is no limitation such as “6 feet under”.
5. Right not to have iTaukei land

permanently alienated whether by sale, grant, transfer or exchange except to the State where iTaukei land is required for a public purpose.

6. Right to have iTaukei land returned to the iTaukei owners where the land is no longer required by the State.

7. Right to beneficial occupation of iTaukei land and right to have iTaukei land reserved for the future maintenance and support of the iTaukei landowning unit.

8. Right to be consulted on the issuance of leases by TLTB and the right to consent or refuse consent on the exclusion of iTaukei land from reserve.

9. Right to receive rental entitlement and other benefits from leases and licences issued by TLTB.
10. Right to invest rental entitlement and other monetary benefits received from leases and licences issued by TLTB.

11. Right to be consulted by TLTB upon expiry of a lease for a renewal of the lease term.

Obligations

1. Not to interrupt or interfere with a tenant’s lawful use and quiet enjoyment of iTaukei land where a lease or licence has been issued by TLTB over the land.
2. Not to trespass or unlawfully enter a tenant’s leased land except with the permission of the tenant.
3. Not to unlawfully prevent a tenant from accessing or having access to iTaukei land leased to the tenant by TLTB.
4. Not to use iTaukei land owned by the iTaukei landowning unit for unlawful purposes e.g planting of illicit drugs.
5. Not to accept goodwill payment from a prospective tenant in exchange for an arrangement to lease iTaukei land. TLTB is the entity lawfully authorized to issue leases and licences over iTaukei land.
6. Not to enter into contracts directly with interested investors for the leasing of iTaukei land owned by the iTaukei landowning unit. The investor(s) should be referred to TLTB for the proper application for lease to be made.■



Mr Komaisalato's farm at Logani Village, Tailevu

iTaukei Development Fund Facility Empowers Landowner in Logani Village

The iTaukei Land Trust Board (TLTB) proudly highlights the success of Mr. Luke Lomasalato of Logani Village, Tailevu, as a testament to the impact of the iTaukei Development Fund Facility (TDFF).

Through this initiative, Mr. Lomasalato has been able to turn his vision into reality by developing his land for commercial agriculture.

With a loan of \$20,000 secured from TDFF, Mr. Lomasalato successfully received an initial disbursement of \$14,576.00, which he utilized for essential land clearing, construction of an access road, and the procurement of vital farming implements. The supplies were sourced from reputable suppliers, including Vinod Patel & Top Multi Supplies and Accessories, ensuring that his farm is equipped for long-term

productivity and sustainability.

The TDFF was launched by TLTB to support iTaukei landowners in unlocking the potential of their land and resources. This initiative not only empowers landowners but also contributes to the national economy by fostering economic growth, encouraging business engagement, and improving the overall well-being of iTaukei people.

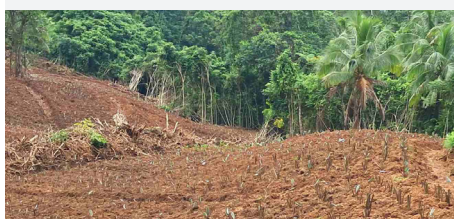
The Facility provides funding for various business activities, including land and resource development, commercial agriculture, property development, transportation businesses, small enterprises, and eco-tourism initiatives. Eligibility is open to individual landowners, landowning groups, and trustees of Mataqali or landowner companies registered under the

Companies Act.

Mr. Lomasalato's success story serves as an inspiration to fellow landowners, showcasing the transformative impact of the TDFF in enabling self-sufficiency and economic advancement.

His determination and effective utilization of the loan facility demonstrate how iTaukei landowners can leverage available financial resources to create prosperous and sustainable ventures.

The iTaukei Land Trust Board remains committed to empowering landowners and encourages more applications to the TDFF to further drive development and economic progress within iTaukei communities ■



Inspection for potential projects in Naitasiri

"Exciting progress in land use planning!"

The iTaukei Land Trust Board (TLTB) round of inspections for Mataqali Nawadaidai in Vunidawa village, Serea, Naitasiri, is underway.

The TLTB team is joined by three Land Owning Units (LOUs) from the villages of Serea, Vunidawa, Waikalou, and Navatukia, carrying out inspections of Mataqali lands to determine land use plans and potential projects for land owning units. ■



Consultation with landowners for the 999 Year Lease at Tavua

Community Consultation on Toko 999 Years Lease

A successful consultation was held today at Tavualevu Village Hall with members of Mataqali Tilivasewa and Mataqali Navusabalavu regarding the Toko 999 Years Lease.

The session was attended by the Chairman of the Board and Minister of iTaukei Affairs Hon. Ifereimi Vasu, CEO of TLTB Mr. Solomon Nata, General Manager Estate Services Isoa Tuwai, General Manager Landowners Affairs Peni Qalo, Government Officials, and members of both Mataqali.

Key discussions took place, and the members were satisfied with the directives given and the assurance from the CEO that the board will not vacate any tenant but will ensure they are issued with appropriate leases.

This engagement provided clarity, reassurance, and strengthened trust between stakeholders, ensuring fair and transparent processes moving forward.

A big vinaka vakalevu to all who participated ■



Over 600 students benefited from the Minors Education Assistance in 2025

Significant Education Assistance Payouts for iTaukei Minors

The iTaukei Land Trust Board (TLTB) is pleased to announce the successful implementation of its Minors Fund 40% Education Assistance initiative, designed to support the educational needs of iTaukei minors. This initiative, which allows minors to access 40% of their funds for education, medical, and national pandemic assistance, has seen a substantial increase in applications and payouts in 2025.

In 2024, following a review of the Equal Rent Distribution (ERD) Policy and Standard Operating Procedures (SOPs), TLTB introduced provisions to demarcate minors' funds, addressing the rising challenges faced by iTaukei school leavers in rural villages due to the high costs of living and education. This policy adjustment, facilitated through collaboration with Unit Trust of Fiji (UTOF), enables a 60:40% separation of minor's fund investments.

2024 Pilot and 2025 Expansion:

In 2024, the initiative's inaugural year, TLTB received 1,187 applications, approving 656 and disbursing \$296,768.50. Building on this success,

a public notice was issued in late November 2024, and applications for 2025 were accepted starting in December 2024, with payments commencing in January 2025.

For 2025, TLTB received a remarkable 7,043 applications, demonstrating the program's growing reach and impact. The applications were categorized as follows:

- Primary Schools: 4,246 applications
- Secondary Schools: 2,795 applications
- Tertiary Institutions: 2 applications

While 1,827 applications were rejected due to non-compliance, the overwhelming response underscores the vital role this initiative plays in supporting iTaukei families. At the close of applications for the assistance, a total of \$2,212,183.20 was paid out.

Challenges and Solutions:

Despite the program's success, TLTB identified several challenges, including:

- Minors not being registered in the

Vola ni Kawa Bula (VKB).

- Discrepancies between birth certificates and the VKB.
- Provision of incorrect information, such as invalid bank account details or incomplete school letters.
- Insufficient funds available for the minors.

TLTB is committed to addressing these challenges through enhanced communication, education, and streamlined processes to ensure more eligible minors can benefit from this crucial assistance.

"The TLTB is dedicated to empowering iTaukei landowners and supporting the educational aspirations of our youth," stated Solomoni Nata, Chief Executive Officer of TLTB. "We recognize the importance of investing in education to secure a prosperous future for our communities."

TLTB remains committed to transparency and efficiency in its services, ensuring that iTaukei landowners receive the support they need to thrive.■



Land Use Planning at Nasarawaqa in Bua

Land Use Planning Training in Nasarawaqa Village, Bua

The Landowners Affairs Department conducted a Land Use Planning Training in Nasarawaqa Village, Bua. As part of this initiative, an inspection and discussion on the advisory & development plan was carried out on Thursday for the respective Landowning Units.

A key highlight of the training was the willingness of Mataqali Nagasauvulavula to allocate a piece of

land for development and collaborate with TLTB and the Fiji Sugar Corporation in a joint venture. This exciting initiative aims to support sugarcane planting, sheep farming, and fish farming, creating economic opportunities and long-term benefits for the landowners and the wider community.

What is Land Use Planning?

Land Use Planning is a strategic approach to managing land resources efficiently and sustainably. It helps landowners maximize the potential of their land by ensuring that it is used for the most suitable purpose,

whether for agriculture, commercial, residential, conservation, or industrial development. The process involves:

- Assessing land potential – Identifying the best land use based on soil quality, location, and environmental impact.
- Consultation & decision-making – Engaging with landowners, stakeholders, and experts to determine sustainable development options.
- Development planning – Creating structured plans that guide how the land will be used to generate economic benefits

while maintaining environmental sustainability.

- Supporting landowner empowerment – Equipping landowners with knowledge and resources to actively participate in decision-making and long-term planning.

This initiative aligns with TLTB's strategic direction to empower landowners by ensuring they play a key role in sustainable land development, fostering economic growth, and securing a better future for their communities.■



Mataqali Nailutuyaga reps

Empowering iTaukei through Business

We are thrilled to preview the ongoing collaboration between the iTaukei Land Trust Board (TLTB) and the Department of Cooperatives in profiling, planning, and establishing a cooperative for the Mataqali Nailutuyaga in Kiuva Village, Tailevu.

This partnership marks a significant step towards empowering the Mataqali Nailutuyaga by providing them with the tools and resources to establish a sustainable cooperative and utilize their resources to bring economic benefits and strengthen community development.

Looking forward to seeing the positive impact this cooperative will have on the people of Kiuva Village! Together, we're building a brighter future.■



Supporting the women of Naivucini in Naitasiri

Strengthening Ties with Naivucini Landowners!

A heartwarming scene unfolded in Naivucini village as women gathered in numbers, singing traditional songs and expressing deep gratitude to the iTaukei Land Trust Board (TLTB).

Their joy was evident as they welcomed CEO Mr. Solo Nata and his team, who visited on Thursday, 30th January, to deliver essential items aimed at supporting traditional gatherings and community meetings.

During the visit, Mr. Nata reaffirmed TLTB's unwavering commitment to landowners, emphasizing that the Board is actively visiting all 190-plus tikinas across the country.

"The idea is to see and experience how our landowners live so that we can ensure they are always at the heart of our planning and decision-making," he stated.

With a renewed focus on its core trusteeship role, TLTB is taking proactive steps to prioritize landowners' needs through sustainable and full utilization of their land resources. Over its 85-year history, the Board has acknowledged past deviations from this mission and is now working diligently to correct course.

The assistance provided costing \$2,998.00 which included a refrigerator, vacuum cleaner, mats, tables, chairs, water urn, and a toaster, was also a token of appreciation for the village's invaluable support in hosting the Senior Managers' Meeting last year. These much-needed resources will help strengthen Naivucini's ability to host future gatherings.

This initiative reflects TLTB's dedication to building stronger relationships with landowners and ensuring they receive the support they need to thrive.■

“We, the iTaukei landowners, adopt good business practices, attitude and take action. While we excel at planning, our dreams often falter when it’s time to act,”

Mr. Solomon Nata



Mr Nata attending New Business Consultation for the landowners at Dakuibeqa in Beqa

Adopt Good Business Practices, Attitude, And Take Action – Nata

Speaking at TLTB consultations in Dakuibeqa Village, Beqa, CEO Mr. Solomon Nata emphasized a persistent challenge faced by iTaukei landowners: limited access to financing.

“For too long, we’ve seen landowners with ambitious plans to develop their land, businesses, and other resources. But the lack of affordable financing has been a dream killer for many,” he said.

To address this, TLTB has introduced the iTaukei Development Fund Facility, offering low-interest loans with no deposit required. This initiative is designed to empower iTaukei

landowners and bridge the financial gap.

“We’ve thoroughly analyzed the lending market and found that high interest rates and deposit requirements exclude many iTaukei landowners from accessing traditional loans. That’s why we’re stepping up—not just as lease administrators, but as a partner in development,” Mr. Nata explained.

To qualify for this assistance, landowners must be registered in the *Vola ni Kawa Bula* (VKB) and have a solid business plan in place. During consultations, the women of Dakuibeqa expressed their interest

in a cooperative bakery business.

They have requested assistance and financial literacy training to improve their operations and ensure long-term success.

This is a call to action for all iTaukei landowners: seize this opportunity to turn your dreams into reality!

Mr. Nata is currently conducting Tikina consultations in Beqa and will move on to the Western Division, with plans to engage with all *Tikinas* in Fiji by the end of the year.■



TLTB teamed up with landowners of Naitasiri to plant trees as part of our CSR initiatives

Adopt Good Business Practices,

TLTB Partners with Naivucini Villagers to Plant Kumquat Trees for Food Security and Economic Empowerment

The iTaukei Land Trust Board (TLTB) joined hands with the villagers of Naivucini in Naitasiri to plant kumquat trees, supporting food security and creating opportunities for economic empowerment.

Led by CEO Mr. Solomon Nata, along

with staff from the Head Office and Central Eastern Region, this initiative provided another opportunity to engage with the community following several consultations in recent months.

A total of 650 kumquat trees were planted within the boundaries of five mataqali: Mataqali Vatutea, Mataqali Drata, Mataqali Nasilimi, Mataqali Nadaravakawalu, and Mataqali Muaira. In Fiji, kumquat trees are highly valued

not only for their edible fruit—used for fresh consumption, juice, jams, marmalades, and pickles—but also as a symbol of wealth and good luck.

This initiative marked the first phase of TLTB’s Corporate Social Responsibility (CSR) program for Suva-based staff, who were joined by their families and landowners in a meaningful and enjoyable community effort.■



Leading the new recruits to believe in what they have been called to do for the landowners in Fiji

Landowners Affairs Division's Workshop

"Let's not forget the sacrifices and work of our chiefs," emphasized CEO Mr. Solomon Nata, as he opened the Landowners Affairs Division's two-day workshop in Suva.

Reflecting on Fiji's rich history, Mr. Nata highlighted the pivotal role of chiefs in shaping the nation – from embracing Christianity and modernization to establishing critical institutions like TLTB.

He shared the Division's renewed focus on two key pillars:

- Enlightenment – Gaining knowledge

from the past to build a brighter future.

- Empowerment – Promoting capacity-building, entrepreneurship, and effective land use.

With exciting initiatives such as the upcoming launch of the iTaukei Bank and a joint land development company, the TLTB aims to create new economic opportunities for landowners.

"Understanding our past is important for meaningful progress," Mr. Nata said,

calling for unity, trust, and collaboration in serving landowners with purpose and dedication.

Guided by the theme "Stronger Together & Redeeming Trust," the workshop reaffirms TLTB's commitment to honoring the sacrifices of Fiji's chiefs while fostering sustainable development for all.

Together, let's pave the way for a brighter, united future!■

Our Locations

Head Office & Central Eastern Region
Level 2, TLTB Building
431 Victoria Parade
GPO Box 116, Suva
T: (679) 331 2733
F: (679) 331 2736

Nausori Office (CE Sub Region)
Level 2,
Jiwanbhai Complex Ross Street,
Nausori.
T: (679) 347 7315
M: (679) 999 7293

Korovou Office (CE Sub Region)
1st Floor,
Waimaro Circuit Building,
Korovou Town
T: (679) 343 0132
M: 998 4519
M: 893 7809

South Western Region
Leve11,
Airport Central Complex, Namaka
Private Mail Bag, Nadi Airport
T: (679) 672 3771
F: (679) 672 3229

Sigatoka Office (SW Sub Region)
1st Floor, Keasuna Complex,
Sigatoka Town
T: (679) 650 0696
F: (679) 998 5905

Northern Region
Leve1, TISI Sangam Building
Nasekula Road
PO Box 32, Labasa Town
T: (679) 881 1122
F: (679) 881 8748

Savusavu Office (NTH Sub Region)
1st Floor, Planters House,
Savusavu Town
T: (679) 828 0797
M: (679) 998 8364

North Western Region
Leve1, Khans Complex
10 Mana Street
PO Box 73, Lautoka
T: (679) 666 1744
F: (679) 665 1254

Rakiraki Office (NW Sub Region)
Shop 1, George Shiu Raj Bldg
FSC Road, Rakiraki Town
T: (679) 669 4120
M: (679) 998 4518

Ba Office (NW Sub Region)
1st Floor, Tower Building,
Ganga Singh St, Ba Town
M: 998 4505
M: 998 8558

